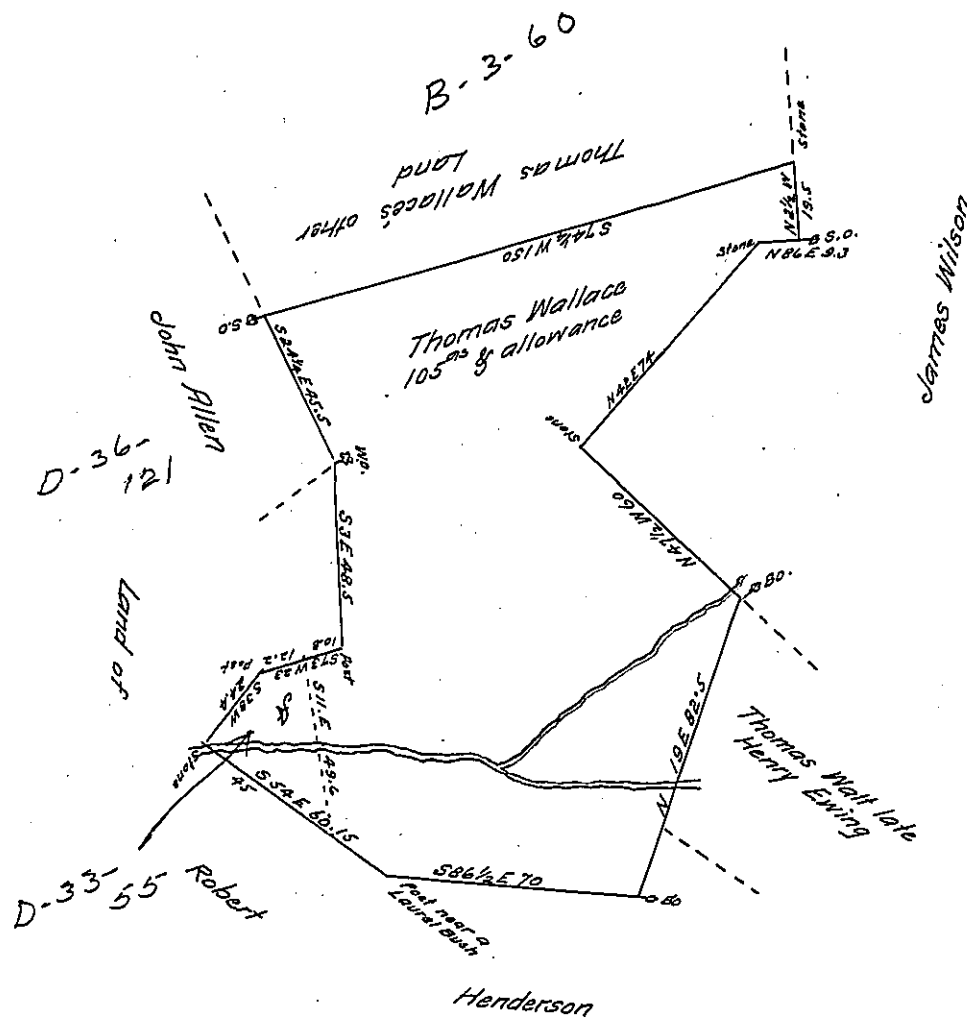


latter A. was cut off & returned for Patenting 15th August 1811, and is pt of 64^{ac} Surveyed on Warrant dated 30th November 1754 for 20^{ac}



The above draft represents a tract of land situate in Lower Oxford Township Chester county containing one hundred and five Acres & allowance of six per Cent for roads &c. Being part of a tract of 321³/₄ Acres & allowance which was returned Anno Dom: 1770 to the Surveyor Generals Office in the name of Thomas Wallace - From the best information I could obtain from George Churchman late a Dep^y Surveyor of Chester County (and from whom I am not able to obtain the Official papers of said County that are in his possession) the above Survey includes 64 acres & allowance Surveyed to Thomas Wallace on his Warrant dated November 30th 1754. Also 22¹/₂ Acres & allowance Surveyed to said Wallace on Warrant dated December 7th 1747. And 18¹/₂ Acres & allowance, part of a tract of 135 Acres, Surveyed in pursuance of two Warrants dated December 7th 1747 granted to said Wallace, which Surveys together with sundry others made in pursuance of other Warrants granted to said Wallace are included in the above mentioned return of 321³/₄ Acres by said Churchman, without respect to the interior lines. Surveyed January 8th 1807.

To Samuel Cochran Esq
Surveyor General

by Ja. Hindman D^s
Explanation

IN TESTIMONY that the above is a copy of the original remaining on file in the Department of Internal Affairs of Pennsylvania, made conformably to an Act of Assembly approved the 16th day of February, 1833, I have hereunto set my Hand and caused the Seal of said Department to be affixed at Harrisburg, this

twenty seventh day of July 1908.
Henry Howell
Secretary of Internal Affairs.